

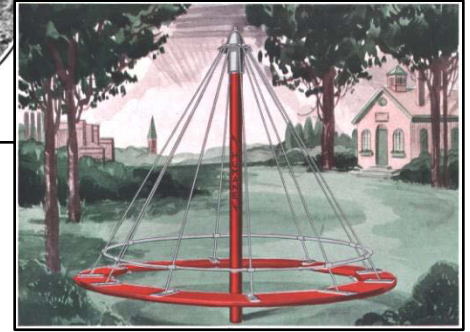
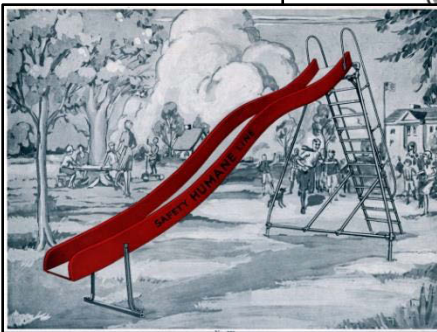
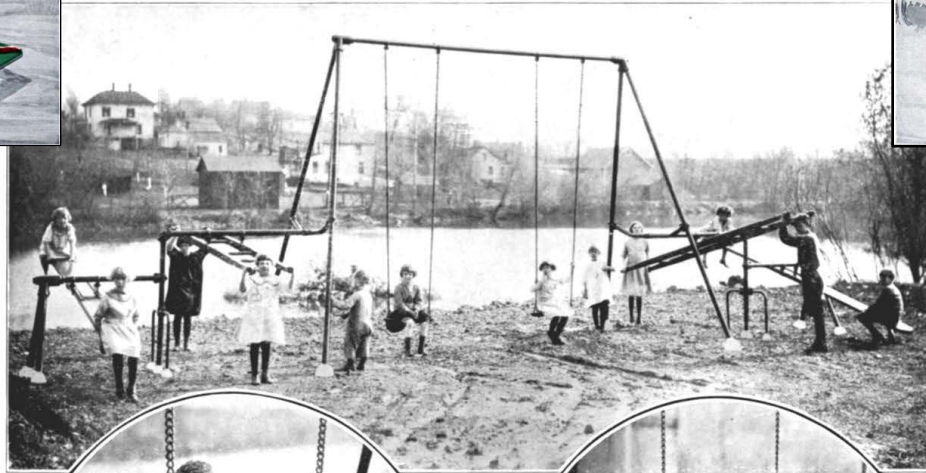
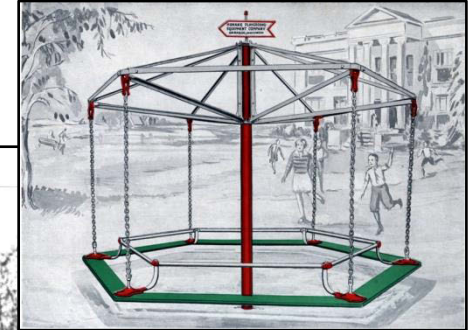
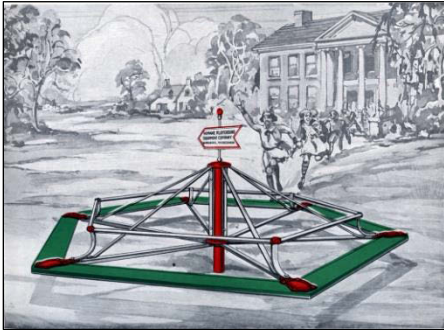
## Old Manchester Bridge connects Attridge Park with Lower Ochsner Park



*This bridge was constructed in 1884 over the Baraboo River in the village of Manchester just east of and adjoining the then village of Baraboo and moved to this location about 1986.*



## Humane "Happy Hour" Playground Equipment Company Park



Humane "Happy Hour" Playground Park  
and Testing Grounds on Water Street and the  
north bank of the Baraboo River...not extant



## Pierce Park, Myron Park & G. Weber Park



City View Park



Myron Park



G. Weber Park





## Statz-Zantow Baseball Field, Broadway Park



June 13, 2011.

Denise Statz prepares to cut the ribbon at a special ceremony at Statz-Zantow Baseball Field. From L-R...Rick Luther-Baraboo Recreational Director, Craig Schlender-Baraboo Parks Commission member, June Dills-Baraboo Parks Commission member, Randy Seymour-Baraboo Parks Foreman, Greg Wise-Park Commission President, Paul Krueger-Parks Commissioner, Dave Statz-Volunteer and Mike Hardy-Baraboo Parks Director.



## About the Parks of Baraboo

### Ochsner Park

In 1988, **Erhart Mueller** published "*The Ochsner Story*" in which he writes that in 1911 Dr. Albert T. Ochsner offered to donate the Ochsner homestead in the western part of Baraboo to the city for an up-to-date hospital on the condition that \$50,000 be raised to erect the hospital and carry on the project. A vigorous effort to solicit the amount was made under the leadership of **Miss. Louise Gattiker**, assisted by a number of Baraboo people, but it proved to be impossible to reach that figure. Some of Baraboo's wealthier citizens preferred to help a hospital under their name, rather than the Ochsner name.

More than \$15,000 was contributed and placed in the bank of Baraboo and for some years it drew interest. In 1929 the money raised was given to St. Mary's Ringling Hospital for charity work, though any subscriber who wished could have their donation returned.

At the regular meeting of the City Council during the month of February of 1921, the aldermen were all present with Mayor Thuerer presiding.

The most interesting feature of that meeting was the report by the Mayor, who had spent considerable time in conferring with **Dr. Albert J. Ochsner** of Chicago, in the matter of purchasing the Ochsner property on Eight Avenue for city park purposes or other purposes if desired. Mayor Thuerer was successful in acquiring the property at \$4,800. The property was valued at \$6,000 and Dr. Ochsner, who was one of the five heirs, donated his share, so that the city would get the property at a low price of \$4,800. The property consisted of 12 acres and undoubtedly was a buy at \$6,000. The money came out of a reserve park fund.

**Ochsner Grove**, as it was called prior to the purchase by the city, was one of the beauty spots of the area, where picnics had been held during the prior few years and greatly enjoyed by the large numbers taking part in these events. The mayor was authorized to complete the land transaction as soon as possible.

Alfred Clas of Prairie du Sac designed the red house, which Henry Ochsner constructed in 1884. Due to the lack of insulation at that time, the home was built with what was termed a vacuum space between the inner walls and the brick. Henry died in 1889 and his wife, Judith passed away in 1891. Children of the couple occupied the home until 1895.

When conditions of the country improved following World War I, the city was in a position to carry out some of the talked of plans in park improvement. One of the moves was to connect Second Avenue with Eighth Avenue along the riverbank at the foot of the park. The River Road was constructed by WPA labor. This road now terminates at river level.

The building of a stone wall on the north border of the Park was undertaken by the city park board as an aid to unemployment in the city. The wall, still extant, would extend the full length of the park from the riverbank east to Park Street, and it would have four entrances down its length, and a parking area on the outside. Members of the board saw to it that the work as far as possible went to those who would otherwise be unemployed. Stone was obtained from the T.A. Meyers farm north of the city, the varieties of stone making a pleasing rugged appearance in keeping with the natural setting of the park.

The present-day bandstand was constructed about 1923 with funds donated by Mr. Grotophorst. [Probably either **Fred Grotophorst**, the husband of **Louise (Ochsner) Grotophorst** or **Herman Grotophorst** who was Chairman of the Park Board]

In October of 1946, the city council authorized the purchase of a barn and a parcel of land adjacent to the park from **Ed Roser**. The barn, which at one time was the Lyon's school, would be used for storage. It is interesting to note that a bell was donated by **Mrs. W. A. Toole** and was mounted on the barn, and was then rung every year when old timers, who went to school in that particular building, held a reunion in the park. In the early 1990's the storage building was razed and a new and larger building constructed.

At one time there were two historic items outside of the park residence; one was a hitching post, which was manufactured by the

Wackler Foundry of Baraboo. This post formerly stood outside the old Moeller Brothers Wagon Shop on Fourth Street. The other item was an old gas lamp, which had stood near Ed. Roser's home early on. A walk around the grounds fails to find these items, but the park department may have knowledge of their location or where they are stored.

In 1958, the scenic drive along the river was reconditioned making it possible to drive the 3/4 mile from Second Avenue to Eighth Avenue. Red and white striping of the new bunny-pens was as colorful as a circus wagon. The octagonal building was topped with a gay chanticleer weather-vane. Also a new winding path connected the lower level of the park with the upper level.

The Ochsner Park Zoo opened in 1926 with two bear cubs from the Kilbourn area and two deer. The zoo has operated continuously since. In October of 2011 work was underway on a new Canadian Lynx exhibit. At the same time plans were in the making for a River Otter habitat that would have a glass viewing section. In 2011, animals on display were Timber Wolves, Prairie Dogs, Capuchin Monkeys, Llamas, Black Bear, Whitetail Deer, Bobcat, Nubian Goat and several types of birds.

For many years, possibly as early as 1918, **Clifford Campbell** and his family lived in the red brick house and watched over the park.

### **Effinger Park**

About 1889 **Ferdinand Effinger Sr.** reclaimed a wooded section on the river bank southeast of the city of Baraboo. There he established the **Effinger Park** complete with picnic tables. For a while it was popular but then over the years became used very little and finally Mr. Effinger closed it to the public. Appreciating the beauty of the spot, Effinger's son Ferdinand J.'s wife decided to build a home there, selecting a site not far from the comfortable little home of Mr. Effinger Sr. Then a couple of cottages were built and the site became a tourist center. By 1929, there were eight cottages, most of which would sleep 8 people, on the well manicured grounds and an

attractive foot-bridge had replaced the old board fence that used to surround the grounds.

### **Mary R. Evans Memorial Athletic Field**

In 1923 the city of Baraboo was busy planning a recreational play ground and park. Grounds for it were purchased from V.V. Moore and consist of four and three-tenths acres between Second Avenue and the Baraboo River, just east of Park Street. The consideration was \$2,600.

Judge E.A. Evans proposed to donate \$1,000 towards the purchase and the playground would then be named in honor of the judge's wife, The **Mary R. Evans Memorial Athletic Field**. Miss Mary Mitchell Rountree was married on September 17, 1902 to Evan A. Evans of Baraboo. Miss Rountree was the granddaughter of Major Rountree, the founder of Plattville. Major Rountree constructed the house they were married in. Both bride and groom were university graduates.

The park board and the school board with the approval of the city council made the transaction jointly. (BDN, 7/28/1923)

### Dedication

The dedication of the Mary Rountree Evans Memorial Athletic Field was held Friday, October 19, 1923. The exercise took place between the two [?] games. Many dignitaries graced the occasion with their presence. The mayors of Baraboo and Reedsburg as well as the superintendents of the Reedsburg and Baraboo schools were present. Also the Reedsburg and Baraboo high school bands participated to the enjoyment of all. The program began at 2:30 PM.

Speakers were Herman Grotophorst-Chairman of the park board of Baraboo, and for the Board of Education-President E.P. McFetridge, high school faculty-Herman Bogard, for the high school students-Robert Pease, Student athletic manager, Member of the Park Board-F.E. Morey and School Principle-Lewis, Mayor Adolph Andro of Baraboo and Mayor Quimby of Reedsburg. Superintendent Kingsford presided. (BDN 10/16/1923)

## About the Parks of Baraboo

At the conclusion of the dedication exercises, Baraboo and Portage staged a "Snappy football contest."

**Stephen Rundio**, a local Baraboo Historian and long time Baseball researcher and fan states that the Baseball Field at Mary Rountree Evans Memorial Athletic Field was dedicated on July 24, 1924. According to Rundio and reported in the Wisconsin State Journal of April 1994, a game was held that day between the "Twin City Red Sox," a semi-pro team from Sauk City led by a former "White Sox" player, centerfielder **Oscar Emil "Happy" Felsch** and a Reedsburg team led by another former "White Sox" player, shortstop and third baseman, **George Daniel "Buck" Weaver**.

Weaver (August 18, 1890 - January 31, 1956) and Felsch (August 22, 1891 – August 17, 1964) were two of the eight players banned from the Major Leagues for their connection to the 1919 Black Sox Scandal.

More can be found about these two players in the "About Baraboo Baseball" section

In 1938, Mr. & Mrs. F. E. Morey presented a deed to the city to a tract of land of approximately 3 acres adjoining the athletic field. The land was to be dedicated for park purposes.

The gate on second avenue entrance is a war memorial made possible through donations by the citizens of Baraboo. The structure is of Devil's Lake stone capped with Bedford rock. The memorial cost about \$1500 and was dedicated to the boys from Baraboo who served during WWI.

### Additional Bleachers

It was decided by the city council in August of 1946 to add additional bleacher seating at the athletic field to seat an additional 1650 people. This would bring the capacity to seat 2,000 fans. The new bleachers were installed in the summer of 1947. Also, in May of 1947 the city council voted to install floodlights at the field by using \$20,000 of the estate of Herman Grotophorst.

On July 1, 1948 the floodlight showered the first athletic event with light. The Baraboo Merchants played an Adams-Friendship team. On September 17, 1948 the first high school

football game was played under the lights against the Madison West's "B's". Baraboo won 24-0.

### Add Tennis Courts

Two new tennis courts were constructed in 1958 at a cost of \$12,000, at the athletic field by the park's department using funds from the Herman Grotophorst Estate.

### Move Athletic Complex to High School Grounds

A motion to move Baraboo's high school athletic complex from the Mary Rountree Athletic Field to the field adjacent to the high School was approved by the Baraboo School Board in April of 1986. The new complex would cost an estimated \$175,000 to complete. The estimate was to include a scoreboard, stationary aluminum bleachers and lights. Funding would come from three sources: The first would be through community fund raisers. The second source would be two existing sinking funds which at that time was approaching \$32,000. The third source would be, cording to the moon passed by the board "whatever else is necessary to make the move in the fall of 1986. The level of improvements to be made would be determined by the board on June 15, 1986.

### **Broadway Park**

**George Martiny** purchased part of this parcel from **H. L. Brethauer** many years prior to 1945, when he purchased the balance of the parcel from the Theurer estate. This park land was then purchased from Martiny by the city of Baraboo in March of 1948, the consideration being \$3500. The property, including a barn, was obtained by the city through condemnation procedures.

### **Pierce Park Softball Complex**

Ribbon cutting and the dedication of the new **Pierce Park Softball Complex** was held on Sunday, July 24, 1983.



The new 15 acre facility, located off highway 123, was on land donated to the city in 1979 by **Don Pierce** in memory of his father, **Ralph Pierce** and his mother, **Lila Pierce**.

Later a hockey building and skating rink was added to the park and lights and fences were later installed at the three new softball fields in Baraboo

#### **Attridge Park**

In 1981, the Baraboo Park and Recreation Board decided to use a fund from Ella E. Attridge's estate, which was donated to the city for the improvement of the Island Woolen Mill property. The amount was \$109,126.00

**Attridge Park** is located along the Baraboo River. It has basketball courts and sand volleyball courts. There is fishing from the shore and is equipped with restrooms in the Attridge Park Building. There is a footbridge across the river to the riverwalk and Lower Ochsner Park. Picnic tables are available.

#### **Kiwanis Riverwalk Park**

Directly west and across Broadway was where the Riverwalk began in 1946 when George Weber, treasurer of the Chamber of Commerce, outlined plans for the walk, some property being already procured for that purpose.

On July 1, 2009 city officials dedicated the new **Kiwanis Riverwalk Park** on the north side of the Baraboo Rapids, east of and adjacent to Broadway.

In June of 2011, a project was moving ahead to extend the Riverwalk from the Circus World Museum area to the section of the completed Riverwalk section on Effinger Drive. This new connecting section cost would be made possible due to a state grant of \$25,000.

Also, in 2011 plans were being discussed to convert the former pump-house on the Baraboo River at the end of Hill Street into a park shelter for hikers and bikers. Director of the Baraboo Parks and Recreation Department, Mike Hardy, stated that he would "like to see the shelter provide a gateway to Baraboo for hikers on the Ice Age Trail, people canoeing on the river and cyclists".

Commissioner Roy Franzen noted that "there is a lot of heavy equipment in the pump-house, so remodeling would not be easy".

#### **Mary Hoppe Felts Park**

**Mary Hoppe Felts Park** is located on the north side of town. It has a basketball court, sand volleyball, and a shelter. Playground equipment and picnic tables are also available.

#### **Campbell Park**

**Campbell Park** is located at the intersection of Business Highway 12 and Highway 123. It is the home of our swimming/splash pools. There is a bathhouse with restrooms and playground equipment. There are also tennis courts and a shelter. Picnic tables are available.

**Robert Vern "Bob" Campbell** passed away on October 9, 2011. Bob started work at Ochsner Park Zoo in 1947 and eventually succeeded his father as the Baraboo Superintendent of Parks and held that position for 20 years, from 1963 until March of 1983. After Bob's retirement, the mayor declared "Bob Campbell Day" and dedicated Campbell Park after Bob's many years of service.

In October of 1936 the city council decided to purchase a five-acre tract from **Oriel F. Philbrick**. The site was located at the southern city limits on Highway 12. The portion of land was called the "Y" junction. The 5-acre site extended north to Lynn Avenue.

The cost of the land was \$4,500 upon which would be constructed a swimming pool at an estimated cost of \$25,000 with the city's share being \$5,000. Works Progress Administration (WPA) labor was used in the building of the pool. The pool architect was **Joseph G. Durrant** of Boscobel. The bathhouse of stone was quarried at **P. A. Wood** quarry near the city by about 20 men. The work was started on October 26 of 1936 employing about 30 men throughout the winter. The pool was opened in May of 1937.

Bob Dewel wrote the following *"In 1994 the pool underwent extensive renovations including a handicap ramp, water heater, splash pool for infants and family dressing rooms. The city's Alma Waite fund provided \$40,000 toward the improvements."*

## About the Parks of Baraboo

A skate board park opened in Campbell Park in 2002. It was funded with \$25,000 in community donations and \$10,000 from the city. **Tonya Borntrager** appeared before the Baraboo Parks and Recreation Commission in September of 2011. Borntrager recently lost her son, **Jaymison Zimmerman** in a drowning accident at Devil's Lake. Zimmerman had been an avid skate boarder and a request was made to name the skate board park after him. The commission turned down the request but said they might back an idea to build a small seating/shelter and name it after him.

### **Helen & Wilbur Deppe Recreation Area**

**Deppe Recreation Area** is located on Lake Street just past the entrance to the Baraboo Country Club. This is a wonderful park to take the dog for a run or even a quick swim. There is a fishing pond and a shelter. Picnic tables are available.

About 1986, dignitaries dedicated 21 acres of land donated by David Deppe in honor of his mother and father, Helen & Wilbur Deppe. Approximately 2-1/2 acres of the land was to be preserved for a recreational area for fishing and training hunting dogs.

### **Baraboo Dog Park**

Baraboo's dog park is located at the intersection of Mill Race Road and Hill Street. Parking is available on Hill Street at the former dog pound building.

#### **Fees:**

City of Baraboo Resident: \$15.00 Annual Pass - \$2.00 daily

Non Resident: \$25.00 Annual Pass - \$3.00 daily

Annual Passes will expire December 31, of the current year. Passes can be purchased at the Clerk's Office in City Hall during regular office hours. ***Owners must provide proof of licensure from the municipality where they live in order to purchase a dog park pass.***

Daily passes should be paid for at the park in the provided collection box.

### **Ritzenthaler Park**

The **Ritzenthaler Park** is located within a residential district at 500 Twelfth. Street. The **Edward Ritzenthaler** family moved their residence from Oak Street to Twelfth Street in 1949. Approximately 1955 the land for the park was donated to the city and it became Ritzenthaler Park. Ed Ritzenthaler died in 1968. When **Mrs. Ritzenthaler (Margaret)** past away in 1988, the family constructed the basketball court in her honor and when son **Dr. Tom Ritzenthaler's** first wife, **Sheree**, passed away in 1992 the Gazebo was added.

### **Myron Park**

In 1986, the city council approved a resolution to remove 1.2 acres from **Myron Park** and allow its sale for the use by the future Baraboo Athletic Club. In return, the city would receive \$8,500 which could be used for upgrading other city parks, including the nearby Campbell Park. This move allowed **Bonnie Sauey, Jim Owens** and **Deb Homan** to move ahead with their dream. The proposed athletic club would occupy 8,500 square feet of the old Soil Test Building.

This sale was contingent upon the approval of the heirs of **George Martiny**. Martiny deeded the land to the city as a park many years prior to 1986. The sale would not include the entire park.

### **Langer Park**

Langer Park is located two blocks south of East School. It has a baseball/softball field, a supervised skating rink with warming house, and a shelter. Playground equipment and picnic tables are available.

### **Lower Ochsner Park**

Lower Ochsner is located along the Baraboo River. There is a soccer field and a footbridge across the river to Attridge Park. The Riverwalk runs through Lower Ochsner Park.

### **Statz-Zantow Baseball Field**

During the year 2011, the baseball field located at the Broadway Park, was renovated and named the **Statz-Zantow Field**



in memory of **Mark Statz** and **Tim Zantow**, two local boys who loved baseball. This renovation was due to "the benevolent work" of **Dave and Denise Statz**, who donated money toward improving the field, as well as the **Baraboo American Legion** who also donated money for the park's renovation. It was planned that the park would be ready for **Little League** play by the end of June, 2011. The city recreation program recently joined the National Little League organization so the field had to be renovated to meet program specifications. The park at one time was used for men's softball play but was moved to the fields at Pierce Park.

#### **Kuenzi Tennis Complex**

**Sandra E. Kuenzi** spent hundreds of hours teaching tennis to boys and girls through the Baraboo recreation program. In 2011 new courts were constructed in Campbell Park, featuring the first public 26" courts in Wisconsin. They were opened to the public in July of 2011.

#### **Nanny Park**

The "Pocket Park" located on the south-west corner of the intersection of Fifth and Oak Streets was formally named "**Nanny Park**" at a council meeting on September 13, 2011.

**Bekah Stelling**, who was a strong proponent for this park, asked for it to be named after her grandmother, Baraboo resident Annette George, whom Kate referred to as "Nanny".

#### **Whiskey Bottle Park**

**Tom Ritzenthaler** recalls, when as a young man going to school, his summer job was with the parks department. One of the un-official parks that he had to maintain was the **Whiskey Bottle Park**. This park was located on a small strip of land between Lynn Avenue and the railroad tracks just west of and adjacent to South Boulevard.

#### **Wisconsin Conservation Corps**

On November 14, 1984 an application was mailed to the Wisconsin Conservation Corps program for funding for park projects in the city. Almost by return mail the application was approved to the tune of \$57,000. Baraboo's application was one of ten selected by the WCC board, out of 67 applications from around the state. These projects were meant to work like the 1930's Civil Conservation Corps, putting people to work.

The city would add \$38,000 to this amount for a total of \$95,000. What it meant for the city was seven new jobs for one year. A crew of six between the ages of 18 and 26 plus a supervisor would be hired.

Park projects in the city were: a new shelter, steps and erosion-control terraces at Ochsner Park, brush removal and renovation of two floors of the Attridge Park building and the construction of score boards for Pierce Park.

#### **G. Weber Park**

Located at 700 Grove Street.

#### **City View Park**

Located on the north-east section of Baraboo on Park View Drive between Tillberry Drive and 19th. Street.

#### **Happy Hour Park**

Happy Hour Park was located north of and adjacent to the Baraboo River on Water Street between Oak Street and Broadway. It was a proving ground for the **Humane Playground Equipment Company**.

#### **Note:**

Author is in need of information on parks mentioned in the preceding pages re: dates etc. Also any Baraboo Parks not mentioned.

Joe Ward 608.356.2102 or joeandlou3610@charter.net

## Baraboo Riverwalk, Campbell Park, Kuenzi Tennis Complex, Skate Boarding addition





## Deppe Park, Baraboo Dog Park, Langer Park, Dean D, Steinhorst Park



Deppe Park



Baraboo Dog Park



Ritzenthaler Park



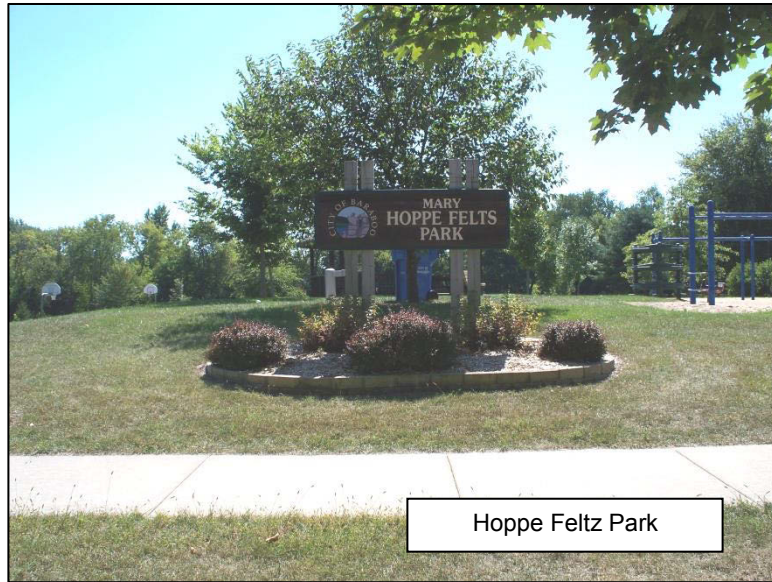
Langer Park



Steinhorst Park



## Hoppe Felts Park, Ochsner Park & Zoo, Mary Rountree Evans Athletic Park, Attridge Park



Hoppe Feltz Park



Ochsner Park and Zoo



Mary Rountree Evans Athletic Field



Attridge Park



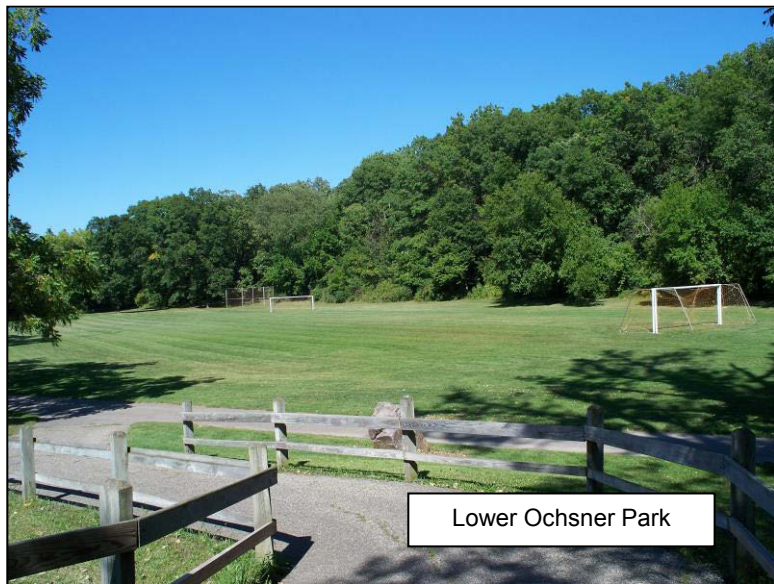
## Kieffer Court, Justin Kieffer Plaque, Lower Ochsner Park, Nanny Park



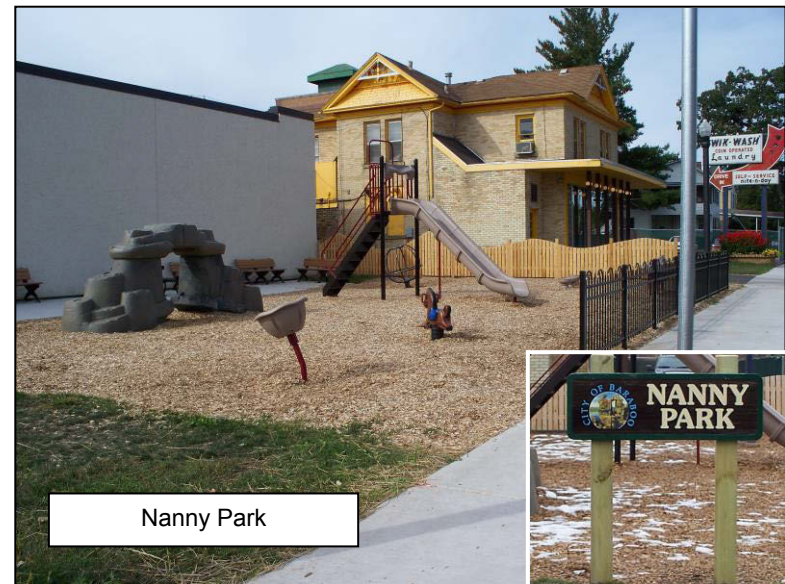
Kieffer Court



Justin Kieffer Plaque



Lower Ochsner Park



Nanny Park

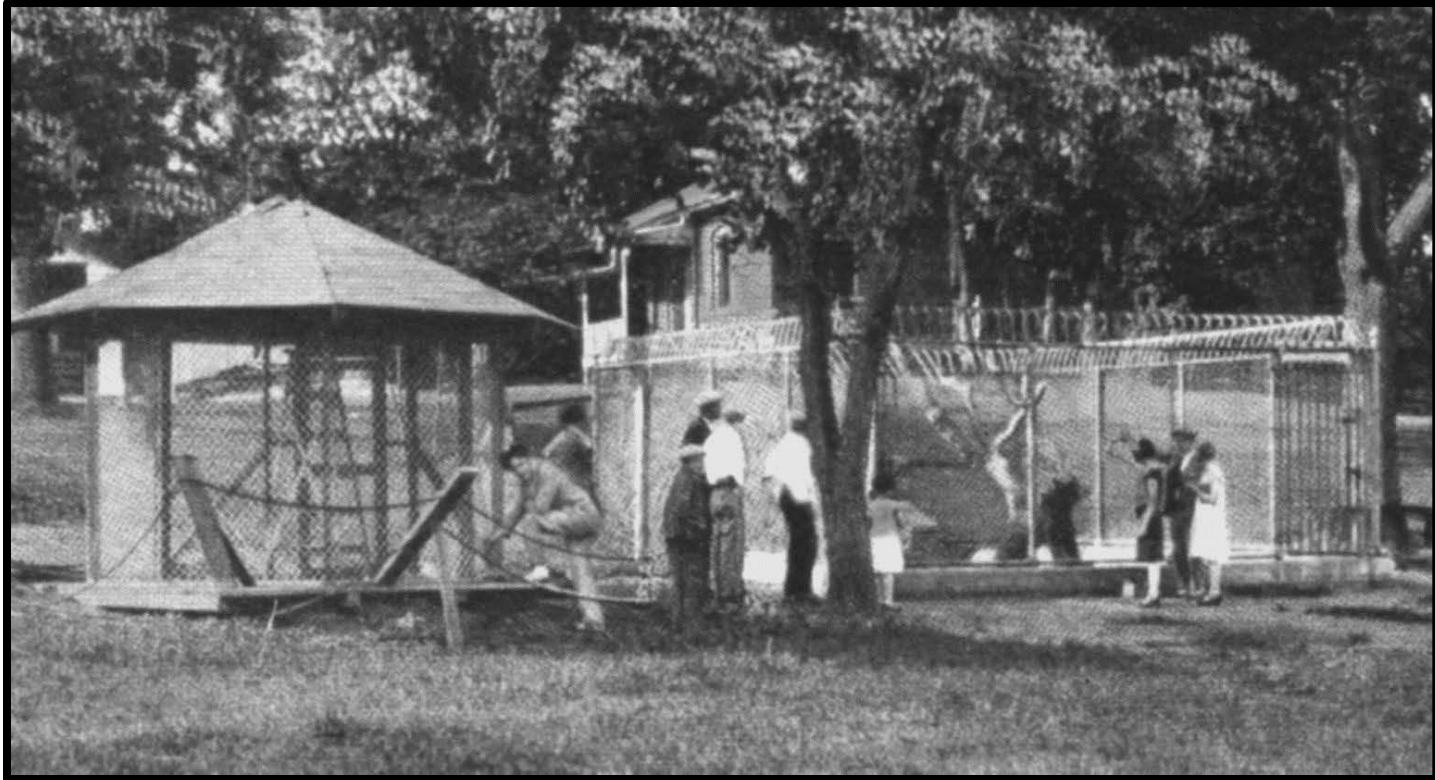


## Effinger Park



Over the Baraboo River to Effinger Park

## Early Zoo at Ochsner Park, circa 1926





## West Baraboo Parks



## Whiskey Bottle Park



Whiskey Bottle Park...S. Blvd. & Lynn Avenue



Playground Equipment added to Attridge Park August, 2012



Clifford Campbell...1959 Circus Parade